



Public Hearing

SR 0080 Section 17M Project

Monroe County Control Center
100 Gypsum Road
Stroudsburg, PA 18360

November 13, 2019

WELCOME!

Purpose of this Hearing

Welcome to the Public Hearing for the SR 0080 Section 17M Project being held by the Pennsylvania Department of Transportation (PennDOT) and the Federal Highway Administration (FHWA). Tonight's Public Hearing gives interested parties an opportunity to provide formal comments on the location and major design features of the preferred alternative (Build Alternative 2D) and associated interchange improvements.

An Environmental Assessment (EA) for the SR 0080 Section 17M Project has been made available for public review and formal comment during a 30-day period beginning on October 25, 2019. Your comments on that document are welcomed as part of this Public Hearing.

The testimony received today, as well as all other comments received during the 30-day period ending on November 29, 2019, will be reviewed and addressed by PennDOT. Based on the results of the EA, the comments received from the public, and PennDOT's responses to those comments, FHWA will determine whether to issue a Finding of No Significant Impact (FONSI) under the National Environmental Policy Act for the SR 0080 Section 17M Project. If issued, the FONSI would designate the alternative selected to advance into final design, right-of-way acquisition, and construction.

This Public Hearing is held in compliance with Title 23, United States Code, Section 128; Title 23, Code of Federal Regulations, Part 771; and Pennsylvania Department of Transportation Act 120 of 1970. The legal notice for this hearing appeared in The Pocono Record on October 25 and November 6, 2019. It was also posted on the project website (80project.com) on October 25, 2019 and printed copies of the EA are provided to the following public locations:

- Eastern Monroe Public Library, **Stroudsburg, PA**
- Monroe County Planning Commission, **Stroudsburg, PA**
- Northeastern Pennsylvania Alliance, **Pittston, PA**
- Federal Highway Administration, **Harrisburg, PA**
- PennDOT District 5-0, **Allentown, PA**
- Senator Mario Scavallo, **Scotrun, PA**
- Representative Maureen Madden, **Stroudsburg, PA**

TODAY'S PUBLIC HEARING AGENDA

4:00 – 5:00 PM

Plans Display (LOBBY)

During this time, plans and other information will be displayed related to the topics listed below, and project team members will be available to answer questions.

- Preferred Alternative and Refinements
- Environmental Features
- Typical Roadway Cross Sections

5:00 PM

Public Hearing Begins (LARGE CLASSROOM)

The Public Hearing will begin with PennDOT presenting a brief official statement of project information. PennDOT will also explain the purpose and format of the Public Hearing. Immediately following those opening remarks, the following three options will be available for the public to provide testimony:

Public Testimony (LARGE CLASSROOM)

Persons who register in the lobby to present public testimony will be called upon to speak from the podium at the front of the room. Public officials and members of the public will be called upon in the order in which they registered. Each speaker's testimony will be limited to three minutes or less and notice of the time remaining will be provided. All testimony will be recorded by a stenographer. There will be no responses to questions raised during testimony and no follow-up questions. Audience members are asked to be courteous and refrain from commenting during the public testimony.

Private Testimony (SMALL CLASSROOM)

The opportunity to present private testimony will be available on a first-come, first-served basis. All testimony will be limited to three minutes or less and will be recorded by a stenographer.

Written Testimony (LOBBY)

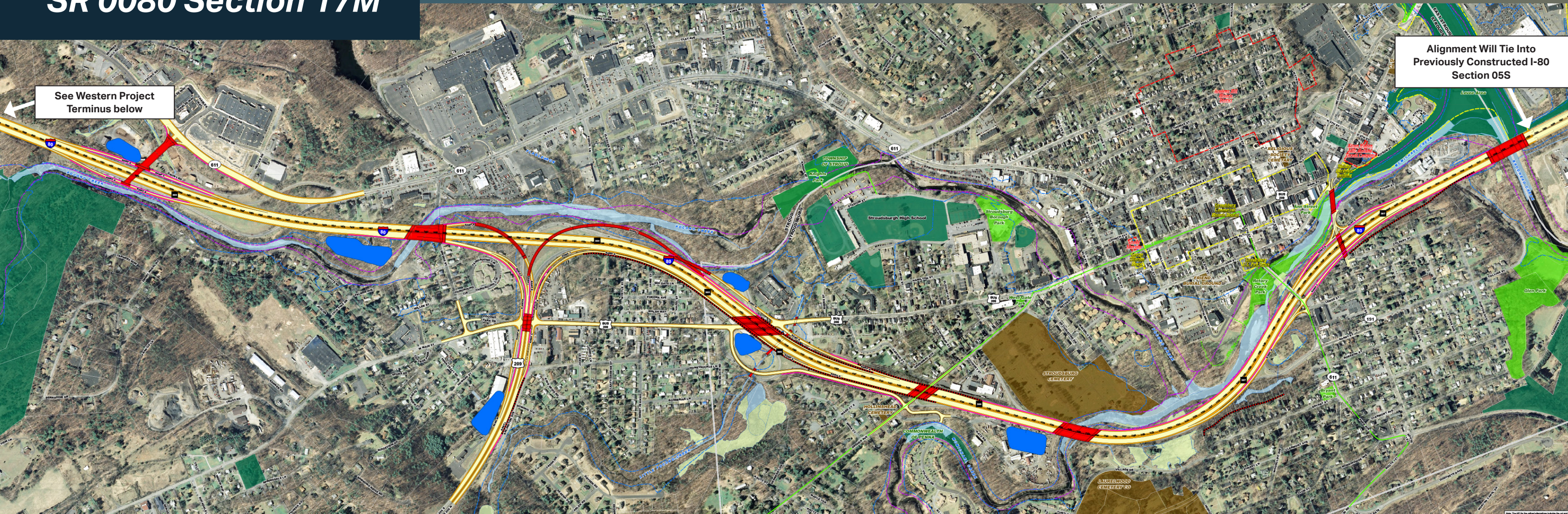
Written testimony may be submitted by completing a comment form and placing it in the designated box in the lobby.

Outside of the Public Hearing, written comments on the EA may be submitted in hard copy to Alex Schieferdecker, AECOM, 1700 Market Street, Suite 1600, Philadelphia PA, 19103 or via email to Alexander.Schieferdecker@aecom.com. Comments will not be accepted via the project website.

To be considered by PennDOT and/or FHWA, comments must be post-marked by November 29, 2019 and must include the name and mailing address of the commenter.

Please refer to Page 2 for a Project Map showing the Preferred Alternative (Build Alternative 2D) and Page 3 for Refinements to Build Alternative 2D and Reasons for the Preferred Alternative.

SR 0080 Section 17M




See Western Project Terminus below

Alignment Will Tie Into Previously Constructed I-80 Section 05S




Western Project Terminus



I-80 RECONSTRUCTION

ALTERNATIVE 2D

EA Hearing Display



Alternative Footprint	Features	Other Features
 Structure	 FEMA 100-yr Floodplain	 Cemetery
 Pavement Shoulder	 FEMA Floodway	 Private or Public Open Space
 Pavement Lanes	 Delineated Waterway	 Public Park
 Retaining Wall	 Wetland	 Existing Trail
 Recommended Noise Wall	 Exit	 Planned Trail
 Storm Water Basin		 NRHP Listed
		 NRHP Eligible

Source: PASDA, PAMAP 2008, Monroe Co., SROSRC, FEMA, PADEP, FHMC.

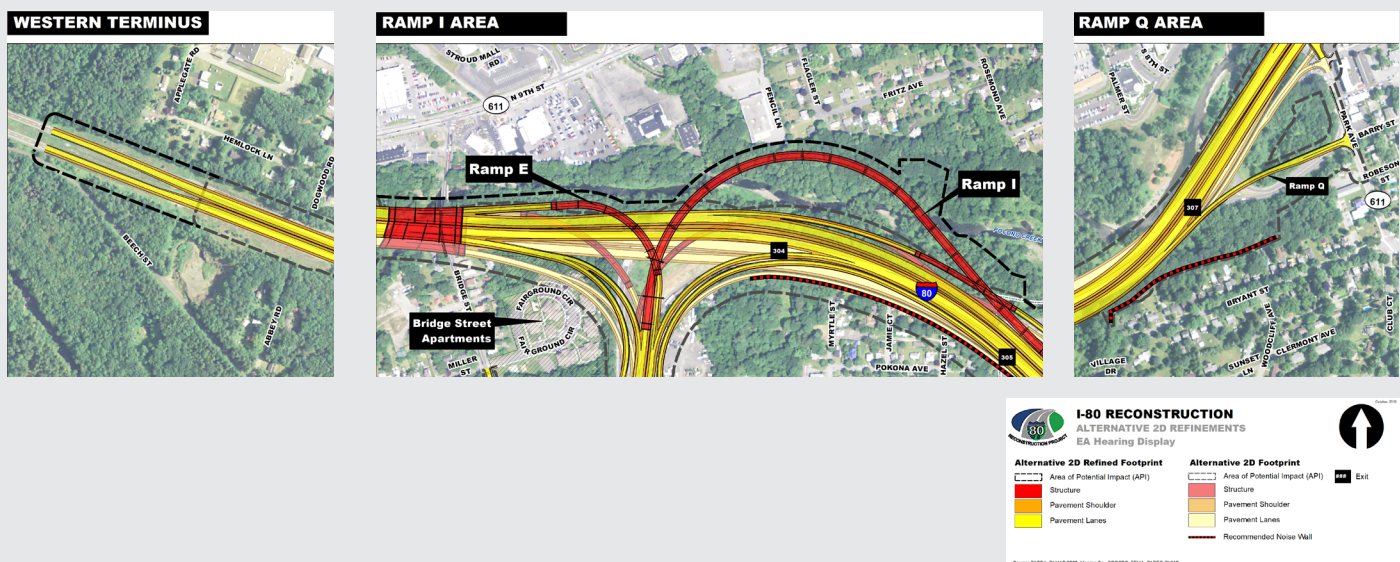
Identification of the Preferred Alternative

Through the development and analysis of the alternatives described in the EA, the project team, the public, local officials, and environmental agencies collaborated to develop the best solution to provide a safe and efficient transportation system for both local and regional connections in the area by reducing future congestion on I-80, improving safety, and addressing deteriorated roadway and bridge components. Build Alternative 2D was identified as the Preferred Alternative because:

- Meets project's purpose and need with best operational performance
- Fewer full property acquisitions and fewer residential and business displacements
- Smaller decrease in property tax revenue
- Less impact on woodlands
- Fewer noise impacts
- Less stream, floodway, and floodplain impacts

DESIGN REFINEMENTS

Minor design refinements were incorporated into the EA. These refinements ensure the project needs are met while keeping two lanes open in each direction and minimizing disruptions to on and off ramps during construction.



PROJECT CONTACT INFORMATION

Imtiaz Nathaniel
PennDOT Senior Project Manager
(610) 871-4564